

**CEDAR KEY WATER AND SEWER DISTRICT**  
**INVITATION TO BID NO: 2025-01**  
**LIFT STATION REHABILITATION – PHASE II**  
**ADDENDUM NO. 5**

**January 27, 2026**

The following changes have been made to the plans & specifications for the above project:

**A. CONTRACT DOCUMENTS/SPECIFICATIONS**

ITEM	DOCUMENT	CHANGE
1.	ITB 2025-01 Lift Station Rehabilitation Phase II: Appendix A - Checklist	The Appendix A – Checklist was revised to remove Appendix E-3 - Equal Employment Opportunity/Affirmative Action Statement from the “Required Forms and Certifications” list. Appendix E-12 - Anti-Human Trafficking Affidavit was added to the “Required Forms and Certifications” checklist.
2.	ITB 2025-01 Lift Station Rehabilitation Phase II: Proposal Transmittal Form (page B-2)	Page B-2 of the Proposal Transmittal Form was revised to include Addendum #5 date and signature.
3.	ITB 2025-01 Lift Station Rehabilitation Phase II: Appendix E-12 - Checklist	Appendix E-12 - Anti-Human Trafficking Affidavit form was added to the ITB 2025-01 Lift Station Rehabilitation Phase II. Interested Bidders shall include this document with their bid package submittal.
4.	Specification 33 32 13 – Submersible Centrifugal Pumps	Section 2.3 – Requirements was revised to include the adjusted operating design conditions.
5.	Attachment C: Levy County – Approved ROW Permit	The approved Levy County – Right-of-Way (ROW) Permit for the LS #16 site has been included to the Technical Specifications as attachment C.

**B. CONSTRUCTION PLANS**

The Addendum #5 drawing sheets outlined below are attached to this addendum.

ITEM	DRAWING SHEET	CHANGE
1.	M-902 (REVISED SHEET)	The Pump Station Improvement Schedule was updated accordingly to reflect the adjusted operating conditions and float elevations.
2.	M-903 (REVISED SHEET)	The Pump Station Improvement Schedule was updated accordingly to reflect the adjusted operating conditions and float elevations.
4.	M-904 (REVISED SHEET)	The revise drawing sheets includes the updated discharge piping CL elevation and fillets required around the bottom of the fiberglass wet well basin per FDEP requirements.

**C. QUESTIONS, COMMENTS, & CLARIFICATIONS**

**Project Questions:**

1. Q. The form for Appendix E-3: “Equal Employment Opportunity/Affirmative Action Statement” could not be found in any of the documents issued for this bid or any of the addendum, can you please provide form or advise where it can be found.
  - A. **Appendix E-3 – Equal Employment Opportunity/Affirmative Action Statement was removed from Appendix A – Checklist. Appendix E-12 – Anti-Human Trafficking Affidavit was added to the checklist, and the Appendix E-12 – Anti-Human Trafficking Affidavit form is attached to this addendum.**

The CONTRACTOR shall acknowledge the receipt of this ADDENDUM by signing below, including a copy with the BID, and acknowledge where indicated.

CONTRACTOR \_\_\_\_\_

BY \_\_\_\_\_

DATE \_\_\_\_\_

**APPENDIX A: CHECKLIST OF REQUIRED FORMS, DOCUMENTS AND CERTIFICATIONS:**

Please submit the items on the following list and any other items required by any section of this ITB. The checklist is provided as a courtesy and may not be inclusive of all items required within this ITB:

- \_\_\_ A. Checklist of Required Forms, Documents, Certifications (Appendix A)
- \_\_\_ B. Bid Form (Appendix B)
- \_\_\_ C. Bid Bond (Appendix C)
- \_\_\_ D. Bidder Qualification Statement (Appendix D)
- \_\_\_ E. Required Forms and Certifications (Appendix E)
  - \_\_\_ 1. Indemnification and Hold Harmless
  - \_\_\_ 2. Public Entity Crimes Sworn Statement
  - \_\_\_ 3. Drug Free Workplace Certification
  - \_\_\_ 4. Disclosure Statement, Conflicts of Interest Disclosure
  - \_\_\_ 5. Non-Collusion Affidavit
  - \_\_\_ 6. List of Proposed Subcontractors and Services to be Performed
  - \_\_\_ 7. Certification Regarding Debarment, Suspension, and Other Responsibility Matters – Primary Covered Transactions
  - \_\_\_ 8. E-Verify Compliance Certification
  - \_\_\_ 9. Required Policy Endorsements and Documentation (Insurance Verification)
  - \_\_\_ 10. Trench Safety Act
  - \_\_\_ 11. Comments on Proposed Contract
  - \_\_\_ 12. Anti-Human Trafficking Affidavit

NAME: \_\_\_\_\_ NUMBER: \_\_\_\_\_

To: THE CEDAR KEY WATER AND SEWER DISTRICT (hereinafter called the "District")

The undersigned, as Bidder declares that the only person or parties interested in this Bid as principals are those named herein, that this Bid is made without collusion with any other person, firm or corporation; that he has carefully examined the location of the proposed work, the proposed forms of Agreement and Bonds, and the Contract Drawings and Specifications, including Addenda issued thereto and acknowledges receipt below:

ADDENDA ACKNOWLEDGMENTS: (IF APPLICABLE)

Addendum #1 dated \_\_\_\_\_ Initials \_\_\_\_\_      Addendum #2 dated \_\_\_\_\_ Initials \_\_\_\_\_  
Addendum #3 dated \_\_\_\_\_ Initials \_\_\_\_\_      Addendum #4 dated \_\_\_\_\_ Initials \_\_\_\_\_  
Addendum #5 dated \_\_\_\_\_ Initials \_\_\_\_\_

Bidder proposes, and agrees if this Bid is accepted, Bidder will contract with the District in the form of the copy of the Agreement included in these Contract Documents, to provide all necessary machinery, tools, apparatus and other means of construction, including utility and transportation services necessary to do all the Work, and furnish all the materials and equipment specified or referred to in the Contract Documents in the manner and time herein prescribed and according to the requirements of the District as therein set forth, furnish the Contractor's Bonds and Insurance specified in the Contract, and to do all other things required of the Contractor by the Contract Documents.

**APPENDIX E-12  
ANTI-HUMAN TRAFFICKING AFFIDAVIT**

***DIRECTIONS:*** All nongovernmental entities that are or potentially will be contracting, renewing or extending contracts with \_\_\_\_\_ must have an officer or representative fully execute this affidavit. Note, this is a mandatory requirement of s 787.06(13), Florida Statutes effective July 1, 2024.

I \_\_\_\_\_ (insert name) as \_\_\_\_\_  
(insert title) on behalf of \_\_\_\_\_ (insert entity name)  
under penalty of perjury hereby attest as follows:

1. I am over 21 years of age and have personal knowledge of the matters set forth in this affidavit.
2. \_\_\_\_\_ (insert entity name) does not use coercion for labor or services as defined in s. 787.06(2)(a), Florida Statutes.
3. More particularly, \_\_\_\_\_ (insert entity name) does not participate in any of the following actions:
  - a. Using or threatening to use physical force against any person;
  - b. Restraining, isolating or confining or threatening to restrain, isolate or confine any person without lawful authority and against her or his will;
  - c. Using lending or other credit methods to establish a debt by any person when labor or services are pledged as a security for the debt, if the value of the labor or services as reasonably assessed is not applied toward the liquidation of the debt or the length and nature of the labor or services are not respectively limited and defined;
  - d. Destroying, concealing, removing, confiscating, withholding, or possessing any actual or purported passport, visa, or other immigration document, or any other actual or purported government identification document, of any person;
  - e. Causing or threatening to cause financial harm to any person;
  - f. Enticing or luring any person by fraud or deceit; or

- g. Providing a controlled substance as outlined in Schedule I or Schedule II of s. 893.03, Florida Statutes to any person for the purpose of exploitation of that person.

FURTHER AFFIANT SAYETH NAUGHT.

\_\_\_\_\_  
Printed Name:  
Title:  
Nongovernmental entity:  
Date:

STATE OF \_\_\_\_\_  
COUNTY OF \_\_\_\_\_

SWORN TO AND SUBSCRIBED before me \_\_\_\_ in person or \_\_\_\_ remote notarization by \_\_\_\_\_ as \_\_\_\_\_ on behalf of \_\_\_\_\_, who is personally known to me or who produced \_\_\_\_\_ as identification this \_\_\_\_\_ day of \_\_\_\_\_, 202\_\_.

\_\_\_\_\_  
Notary Public

(Notary Seal)

## SECTION 33 32 13 - SUBMERSIBLE CENTRIFUGAL PUMPS

### PART 1 - GENERAL

#### 1.1 DESCRIPTION

- A. The Contractor shall furnish and install the submersible non-clog pumps, related piping, supports, and all other necessary appurtenances as shown on the drawings and specified in these specifications.

#### 1.2 SUBMITTALS

- A. Submit shop drawings, technical data, and pump curves in accordance with Section 01 33 00. Submit operation and maintenance data in accordance with Section 01 78 23.
- B. The following General guidelines shall be used in preparing submittals:
  - 1. MANUFACTURER's specification or data sheets shall be clearly marked to delineate the options or styles to be furnished. Options or equipment not being provided shall be neatly crossed-out.
  - 2. Submit an American Iron and Steel (AIS) certification letter indicating that the materials used to construct the submersible pumps, at a minimum, meet or exceed the American Iron and Steel requirements as described in Section 255.0993, Florida Statutes (American Iron and Steel).
  - 3. Submit only complete systems, not pieces of equipment from various systems.
  - 4. Submittals shall reference assigned equipment and device tag numbers.
  - 5. Submittals not following these and related requirements will be returned without review by the ENGINEER.

#### 1.3 QUALITY ASSURANCE

- A. All pumps shall be furnished by a single manufacturer.
- B. Reference Standards
  - 1. American Iron & Steel Institute (AISI)
  - 2. American Society for Testing and Materials (ASTM)
  - 3. Factory Mutual (FM)
  - 4. Hydraulic Institute Standards for Centrifugal, Rotary, and Recip Pumps (HI)
  - 5. National Fire Protection Agency (NFPA)
  - 6. National Electric Code(NEC)
  - 7. National Electrical Manufacturers Association(NEMA)
  - 8. Anti-Friction Bearing Manufacturers Association(AFBMA)
  - 9. International Standards Organization (ISO) - ISO9001

#### 1.4 OPERATION AND MAINTENANCE MANUALS

- A. At a minimum, the operation and maintenance manual shall meet the requirements in Section 01 78 23 – Operation and Maintenance Data, and the requirements set forth below.
- B. Operation and maintenance manuals will be provided by the equipment MANUFACTURER at least two weeks prior to shipment of major equipment components. Each manual shall be a bound, indexed binder with drawings and parts lists prepared specifically for this project rather than general instructions that are not designed for this project. Operation and Maintenance manual shall also be provided electronically as a searchable pdf document.
- C. As a minimum the manual shall contain:
  - 1. Certified as-built drawings (general arrangement and general arrangement detail drawings).
  - 2. Erection drawings.
  - 3. A complete bill of materials for the equipment including the weights of all structural steel components.
  - 4. Installation and maintenance instructions for the specific equipment including the erection sequence, maintenance and trouble-shooting check points, and complete lubrication procedures with recommended grades of lubricants.
  - 5. Cut sheets for all equipment items purchased from sub-vendors.
  - 6. A list of the equipment MANUFACTURER's recommended spare parts specifically denoting wear items, long delivery items, and all items convenient for stocking as optional replacement items.

#### 1.5 DELIVERY

- A. Shipment and Labeling of Spare Parts:
  - 1. The MANUFACTURER is responsible for shipment and labeling of spare parts.
  - 2. When spare parts are packed in containers, each container must bear a label that clearly designates the contents and the pieces of equipment for which the parts are intended.
  - 3. Each individual part shall be identified with a tag or label bearing its part number and a part description.
  - 4. Spare parts shall be delivered at the same time as the equipment.
- B. Unloading and Storage of the Equipment:
  - 1. The CONTRACTOR is responsible for the unloading and storage of the equipment.
  - 2. The pumps must be stored per the MANUFACTURER's instructions.
  - 3. All products shall be properly insured.

#### 1.6 PUMP WARRANTY

- A. The pump manufacturer shall warrant the pump, motor and guide system to the Owner against defects in workmanship and materials for a period of seven (7) years under normal use and service. A copy of each warranty shall be provided to the Owner at startup.

### PART 2 - PRODUCTS

## 2.1 GENERAL

- A. The Contractor shall furnish and install two (2) submersible non-clog sewage pumps for the existing lift station. Each pump shall be furnished with a stainless-steel lifting cable per manufacturers recommendations.

## 2.2 MANUFACTURER

- A. Pentair Myers

- B. Approved Equal

1. All products, whether named as "acceptable" or proposed as "equal" must fully comply with these specifications. Standard product must be modified, if required, for compliance. The CONTRACTOR shall base his bid price on product offered by Pentair Myers for purposes of determining the successful bidder on this project. The CONTRACTOR may submit, with the bid, an alternate proposal with applicable deduct if any for supplying product other than Pentair Myers. Alternate proposals must include a clear statement of each point of difference between the proposed alternate product and these specifications. The Owner and Engineer reserve the right to reject any bid not based on Pentair Myers product.
2. MANUFACTURER of alternate equipment to submit a pre-approval package to ENGINEER at least two (2) weeks prior to bid date. Alternate MANUFACTURER to submit the following information and supporting documentation:
  - a. Complete set of drawings, specifications, catalog cut sheets, and detailed descriptive material. Drawings showing all relevant details of unit to identify technical and performance requirements stipulated on Drawings and in the Specifications. If proposed equipment does not meet these specifications, deviation from specification must be expressly noted, listed on a single document.
  - b. Detailed installation drawings illustrating how proposed equipment fits to structures. Drawings to include plan, elevation, and sectional views of the installation, and details of anchor bolt locations.
  - c. Hydraulic performance curves showing the relationship of headloss versus flow. Curves based upon other MANUFACTURER's data are not acceptable.
  - d. Motor characteristics and performance information. Furnish vendor data to confirm drive torque and thrust rating.
  - e. Complete reference list of all installations of same and similar equipment, including contact names and phone numbers, showing at least 5 installations of same type and size as specified.
  - f. Complete bill of materials for all equipment, showing dimensions and materials of construction of all components.
  - g. Details of control and instrumentation system including wiring diagrams.
  - h. Information on equipment field erection requirements including total weight of assembled components and weight of each sub assembly.
  - i. List of recommended spare parts.
  - j. Maintenance schedule showing required maintenance, frequency of maintenance, lubricants, and other items required at each regular preventative maintenance period, including all buy out items.
3. If an alternate pump MANUFACTURER is deemed approved and selected by the CONTRACTOR for installation, instead of the pumps used for the Basis of Design, then

the changes are at no additional compensation and the MANUFACTURER will be responsible for all engineering costs of redesign by the ENGINEER, if necessary.

## 2.3 REQUIREMENTS

### A. Lift Station #2 System Description

1. Operating Conditions - Design: 154 GPM @ 19.2 FT TDH @ 35%
2. Minimum Shutoff head: 27 FT
3. Maximum Motor HP: 3.0 HP
4. Maximum Motor RPM: 1750 RPM

### B. Lift Station #3 System Description

1. Operating Conditions - Design: 198 GPM @ 28.0 FT TDH @ 39.0%
2. Minimum Shutoff head: 28.4 FT
3. Maximum Motor HP: 3.0 HP
4. Maximum Motor RPM: 1750 RPM

### C. Lift Station #4 System Description

1. Operating Conditions - Design: 84 GPM @ 24.5 FT TDH @ 41%
2. Minimum Shutoff head: 28 FT
3. Maximum Motor HP: 3.0 HP
4. Maximum Motor RPM: 1750 RPM

### D. Lift Station #5 System Description

1. Operating Conditions - Design: 112 GPM @ 22.0 FT TDH @ 35.5%
2. Minimum Shutoff head: 28.7 FT
3. Maximum Motor HP: 3.0 HP
4. Maximum Motor RPM: 1750 RPM

### E. Lift Station #15 System Description

1. Operating Conditions - Design: 137 GPM @ 39.9 FT TDH @ 46.3%
2. Minimum Shutoff head: 48.6 FT
3. Maximum Motor HP: 5.0 HP
4. Maximum Motor RPM: 1750 RPM

### F. Lift Station #16 System Description

1. Operating Conditions - Design: 115 GPM @ 34.8 FT TDH @ 41.5%
2. Minimum Shutoff head: 39.6 FT
3. Maximum Motor HP: 5.0 HP
4. Maximum Motor RPM: 1750 RPM

## 2.4 PUMP MATERIALS

### A. Submersible Sewage Pumps

1. Pump shall be Myers Model Number 4RX and 4VX Solids Handling Submersible Pump with recessed type impeller. All openings in pump shall be large enough to pass a 3" diameter sphere. Discharge flange shall be four (4) inch standard. 4RX and 4VX pump and motor assembly shall be FM listed for Class 1, Group D hazardous location service.

B. Motor

1. Pump motor shall be of the sealed submersible type rated. See motor HP requirements above. Three phase motors shall be NEMA B type. Stator winding shall be of the open type with Class F insulation good for 155°C (311°F) maximum operating temperature. Winding housing shall be filled with a clean high dielectric oil that lubricates bearings and seals and transfers heat from windings and rotor to outer shell. Air-filled motors, which do not have the superior heat dissipating capabilities of oil-filled motors, shall not be considered equal. Motor shall have two heavy-duty ball bearings to support pump shaft and take radial and thrust loads and a sleeve guide bushing directly above the lower seal to take radial load and act as flame path for seal chamber. Ball bearings shall be designed for 50,000 hours B-10 life. Stator shall be heat shrunk into motor housing. A heat sensor thermostat shall be attached to and embedded in the winding and be connected in series with the motor starter contactor coil to stop motor if temperature of winding is more than 120°C (248°F). Thermostat to reset automatically when motor cools to safe operating temperature. Three heat sensors to be used on 3 phase motors. The common pump motor shaft shall be of 416 stainless steel.
2. Provide motors which are FM listed for use in Class I Division 1 Groups C&D hazardous locations as defined by the National Electric Code.

C. Pump Case

1. The volute case shall be of cast iron and have a flanged center line discharge. Discharge flange shall be 4" standard with bolt holes straddling center line.

D. Pump and Motor Castings

1. The pump shall be painted with waterborne hybrid acrylic/alkyd paint. This custom engineered, quick dry paint shall provide superior levels of corrosion and chemical protection.

E. Bearing End Cap

1. Upper motor bearing cap shall be a separate casting for easy mounting and replacement.

## 2.5 LIFT-OUT RAIL SYSTEMS

- A. General: Furnish and install a complete solids handling sewage pumping system consisting of two (2) Myers 4RX or 4VX submersible solids handling sewage pumps and lift-out rail systems, valves, controls, access cover(s) and all other appurtenances to make a complete system. The lift-out rail system should be sized accordingly to serve the submersible pumps. For hazardous locations, the lift-out rail system shall be of nonsparking design and shall be listed for hazardous location service.

B. Components

1. Each lift-out rail system shall consist of a ductile iron discharge base, cast iron (brass for hazardous locations) pump attaching and sealing plate, cast iron (brass for hazardous locations) pump guide plate, and cast iron elbow. All exposed nuts, bolts, and fasteners shall be of 316 stainless steel. No fabricated steel parts shall be used.

C. Guide Rails

1. Two rail pipes shall be used to guide the pump from the surface to the discharge base connection. The guide rails shall be 2" schedule 40 316 stainless steel pipe. The weight of the pump shall bear solely on the discharge base and not on the guide rails. Rail systems that require the pump to be supported by legs that might interfere with the flow of solids into the pump suction will not be considered equal. The guide rail shall be firmly attached to the access hatch frame. Systems deeper than 21 feet shall use an intermediate guide for each 21 feet of wetwell depth.

D. Base Elbow

1. Discharge elbow shall be cast-iron and coated to minimize corrosion. Elbow shall bolt onto base and have standard 125 lb. flanges. Rail systems requiring piping increasers to attach larger discharge pipe that might interfere with pump installation and removal will not be considered equal.

E. Sealing

1. A sealing plate shall be attached to the pump. A simple downward sliding motion of the pump and guide plate on the guide rails shall cause the unit to be automatically connected and sealed to the base.

F. Lifting Chains

1. An adequate length of 316 stainless steel lifting chain shall be supplied for removing the pump. The chain shall be of sufficient length and shall include an adequate number of lifting rings for easy removal.

2.6 ACCESSORIES

A. Power Cable

1. Pump MANUFACTURER is responsible for providing sufficient power cable length from the submersible pumps to the proposed control panel. Power cord and control cord shall be double sealed. The power and control conductor to seal outer jacket against leakage and to provide for strain pull. Cords shall withstand a pull strain to meet FM requirements. Insulation of power and control cords shall be type SOOW or W. Both control and power cords shall have a green carrier ground conductor that attaches to motor frame.

B. Temperature Protection

1. Furnish temperature monitoring devices in motor windings for use in conjunction with and supplemental to external motor overload protection. Arrange controls to shut down pump should any of the monitors detect high temperature and automatically reset once motor temperature returns to normal. Set temperature monitors at levels recommended by pump manufacturer.

C. Seal Leak Detection

1. Provide a detector in the motor's stator cavity which allows a control panel mounted relay to indicate leakage into the motor. In addition, on motors 80HP and larger provide a stainless steel float switch in a separate leakage collection chamber to indicate leakage past the inner mechanical seal prior to its entrance into either the motor stator cavity or the lower bearing. Electronic probes which depend on sensing resistance value changes in seal oil will not be acceptable as seal leak indicators.

D. Pump Safe Motor Sensor Monitoring Relay

1. The pump supplier shall furnish all relays required for monitoring all motor sensors. The relays shall be installed by others in the motor control panel and properly wired in accordance with pump manufacturer's instructions. Relays shall mount in standard 12-pin socket bases (provided) and shall operate on available control voltage of 24-240 VAC. If relays require an input voltage that is not available in the motor control panel an adequate transformer (with fused input) shall be provided by the pump supplier. Relays shall have a power consumption of no more than 2.8 watt, and shall be UL approved. Relays shall be modular in design, with each relay monitoring no more than two motor sensor functions.
2. Each relay module shall include a dual color (red/green) LED to indicate the status of each monitored sensor. Green will indicate "status OK"; red will indicate a failure or alarm condition. A self-corrected fault will allow the relay output contacts to reset and cause the LED to change from a steady alarm indication to a flashing signal. The LED shall continue to flash until locally cleared, providing the operator an indication of a potential intermittent fault. Each relay shall also include a power-on LED and both "test" and "reset" pushbuttons.
3. An independent fail-safe (switch on power loss) form-C output contact shall be included for each monitored sensor to provide a normally-open / normally-closed dry contact to initiate a remote alarm device or shut down the motor. Contacts shall be rated for 5 amps at 120 volt.

2.7 FABRICATION

A. General

1. All submersible pump components constructed of iron or steel shall comply with Section 255.0993, Florida Statutes (American Iron and Steel). The pump components listed below are either required to meet the American Iron and Steel requirements or are exempt from those requirements.
  - a. Submersible Pump Components NOT EXEMPTED From AIS Requirements:
    - 1) Pump casing / volute

- 2) Impeller (cast iron or stainless steel)
- 3) Shafts
- 4) Wear rings
- 5) Discharge elbows
- 6) Suction bells
- 7) Flanges
- 8) Steel or ductile iron baseplates
- 9) Mounting frames
- 10) Guide rails (for submersible pumps)
- 11) Lifting chains (steel)
- 12) Steel fasteners supplied as discrete items
- 13) Mechanical seals (metallic components)

b. Submersible Pump Components EXEMPTED From AIS Requirements:

- 1) Electric motors (integral or separate)
- 2) Motor windings and stators
- 3) Control panels and enclosures
- 4) Sensors and instrumentation, including:
  - a) Level sensors
  - b) Pressure transducers
  - c) Temperature sensors
- 5) Power cables and wiring
- 6) Electrical conduit and raceways
- 7) Electrical supports, covers, shielding, and mounting hardware
- 8) Pump-mounted junction boxes
- 9) SCADA interfaces and communication devices

2. Provide pumps capable of handling raw unscreened wastewater. Design pumps to allow for removal and reinstallation without the need to enter the wet well and without removal of bolts, nuts, or other fasteners. Provide a pump which connects to a permanently mounted discharge connection by simple downward motion, without rotation, guided by at least two non-load-bearing guides. All system components for guide cable systems, including cable, shall be supplied, and warranted by the pump manufacturer. For guide pipe systems the pipe shall be supplied and warranted by the installing contractor. Final connection shall ensure zero leakage between pump and discharge connection flange. Provide a discharge connection/ guide system so that no part of the pump bears directly on the floor of the wet well. Provide Type 316 stainless steel chain of sufficient length to lift pumps properly and safely from the wet well. All exposed cast iron and ferrous surfaces shall be cleaned of dirt and grease, sandblasted to near white finish, and coated with an anti-corrosion reaction primer. The pump shall then be coated with two-component thick coat paint, with an epoxy resin base, having at minimum 83% solids by volume. This coating shall be non-toxic and approved for both wastewater and water applications.

B. Major Components

1. Furnish major components (pump case, impeller, intermediate housing, motor housing) of cast material as specified with smooth surfaces devoid of blow holes and other irregularities. Pump case design shall incorporate a centerline discharge for stability when mounted on the base elbow.
2. Recessed Type Impeller

- a. The impeller shall be cast ductile iron and of the recessed type. Pump-out vanes shall be used on back shroud. Impeller shall be dynamically balanced. Impeller shall be driven by stainless steel key and impeller held in position with lock screw and washer. Impeller and motor shall have top lift-out of case so that the assembly can be removed without disturbing any piping.

C. Seals

Motor shall be protected by two mechanical seals mounted in tandem with a seal chamber between the seals. Seal chamber shall be oil filled to lubricate seal face and to transmit heat from shaft to outer shell. Seal face shall be carbon and ceramic and lapped to a flatness of one light band. A double electrode shall be mounted in the seal chamber to detect any water entering the chamber through the lower seal. Water in the chamber shall cause a red light to turn on at the control box. This signal shall not stop the motor but shall act as a warning only, indicating service is required.

D. Motor

1. Provide a motor which is squirrel cage, induction in design, housed in a completely watertight and air-filled chamber, with a min 1.15 service factor. The motor shall be adequately sized and rated for continuous operation at a maximum fluid temperature of 104° F (40° C). Allowable maximum submergence shall not be less than 100 ft (30 m). Insulate the motor stator with, at minimum, Class H insulation rated for 180 Degrees C. Windings shall be insulated using trickle impregnation process to ensure uniformity with a winding fill factor of at least 95%. The use of multiple step “dip and bake” type stator insulation method shall not be acceptable. The rotors bars and short circuit rings shall be made of cast aluminum. The motor and pump set complete shall be designed and manufactured by the same company. Provide temperature protection and seal leak detection as described in above. Provide adequately rated motor with sufficient surface area for ambient only cooling suited for the intermittent mode of operation in wet well wastewater applications, submerged or partially submerged, without damage. Motors containing di-electric oils used for motor cooling and/or bearing lubrication or motors where the pumped media or externally provided fresh water is directed through the motor shell for cooling is not acceptable.

## PART 3 - EXECUTION

### 3.1 INSTALLATION OF EQUIPMENT

- A. The Contractor shall install equipment as required by the manufacturer's written installation instructions and approved shop drawings unless otherwise directed by the Engineer.
- B. Excess motor and control wire shall be carefully coiled and hung inside the wet well. These wires shall not be cut, and all identification tags shall be in place. Cables shall be supported with S.S. basket weave type strain reliefs hung in wet well and be routed in a manner that will not interfere with access to any equipment or terminals in the control panels.

### 3.2 SPARE PARTS

- A. A.The following spare parts shall be supplied by the contractor for each of the pump stations:
1. (1) Set of upper and lower shaft seals
  2. (1) Set of upper and lower bearings
  3. (1) O-ring kit
  4. Standard Pump Manufacturer Spare Parts.

### 3.3 PUMP TEST

- A. The pump manufacturer shall perform the following inspections and tests on each pump before shipment from factory:
1. Impeller, motor rating and electrical connections shall first be checked for compliance to the customer's purchase order.
  2. A motor and cable insulation test for moisture content or insulation defects shall be made.
  3. Prior to submergence, the pump shall be run dry to establish correct rotation and mechanical integrity.
  4. The pump shall be run for 30 minutes submerged under a minimum of six (6) feet under water.
  5. After operational test No. 4, the insulation test (No. 2) is to be performed again.
- B. A written report stating the foregoing steps have been done shall be supplied with each pump at the time of shipment upon request.
- C. The pump cable end will be sealed with a high quality protective covering, to make it impervious to moisture or water seepage prior to electrical installation.

END OF SECTION 33 32 13

# Levy County ROAD DEPARTMENT

Post Office Box 336

Bronson, Florida 32621-0336

Phone 352-486-5124

## PERMIT FOR WORK ON COUNTY RIGHT OF WAY

- (1) LOCATION: Northwest corner of SW 165th Terrace and SW 120th Place (Levy County R/W)
- (2) PERSON HAVING WORK DONE: Cedar Key Water and Sewer District  
Email: jrittenhouse@ckwater.org  
Address: 510 3rd Street, Cedar Key, Florida 32625  
Telephone: 352-543-5285
- (3) CONTRACTOR OR PERSON DOING WORK: Baskerville-Donovan, Inc.  
Email: ttee@baskervilledonovan.com  
Address: 449 West Main Street, Pensacola, Florida 32502  
Telephone: 850-530-1939
- (4) WORK TO BE DONE:  
See attached additional information document

### APPLICANTS STATEMENT:

I hereby certify that the above information is true and correct and that I obligate myself to properly complete the work covered by this application and to replace any materials removed or repair any damage done on County Right of Way.

## LEVY COUNTY ROAD DEPARTMENT

Application APPROVED: XXX  
NOT APPROVED: \_\_\_\_\_

DATE: 1-26-2026  
BY: Casey Duquette

Satisfactory completion of is work requested by this application.  
PERMIT GOOD FOR 1 YEAR FROM DATE OF APPLICATION

FINAL APPROVED: \_\_\_\_\_ FINAL DATE: \_\_\_\_\_  
NOT APPROVED: \_\_\_\_\_ SIGNED: \_\_\_\_\_

WORK ORDER NUMBER: 123503.03 16551 SW 120 PL

**To:** Levy County – Road Department

**From:** Baskerville-Donovan, Inc.

**Date:** Thursday, January 22, 2026

**Subject:** Levy County Right of Way Permit: Section 4 – Work To Be Done Additional Information

---

### **Section 4 – Work To Be Done**

- **Rehabilitation Scope of Work:** Rehabilitate the existing Lift Station #16 site. Rehabilitation includes replacement of pumps, piping, valves, fittings, a portion of the concrete wet well, electrical components, and site fencing. The proposed rehabilitation work will occur off the edge of the roadway, and the Contractor will be required to restore the right-of-way to existing conditions or better.
  
- **Lift Station Rehabilitation Inspection Process for Civil, Mechanical, Electrical, & Structural Components:**
  - 1) Prior to construction, the Engineer of Record (e.g., civil, mechanical, structural, and electrical) will review and approve all material- and equipment-related shop drawings submitted by the Contractor to ensure that the items installed in the field comply with state and local requirements, as well as the construction plans, technical specifications, and approved permits.
  - 2) Once the material and equipment arrive on site, BDI's construction inspector will review and confirm that the items delivered to the project site comply with the approved shop drawings. Please note that BDI's project inspector will be on site, at a minimum, eight (8) hours per day, five (5) days per week, or whenever the Contractor and/or subcontractor is on site.
  - 3) During construction, the inspector shall review and confirm that the materials and equipment installed comply with state and local requirements, as well as the construction plans, technical specifications, and approved permits. The construction inspector will also document the work performed by the Contractor and/or subcontractor (e.g., construction descriptions and photographs) and provide a weekly field report summarizing the work completed during the week.
  - 4) If the construction inspector identifies materials and/or equipment that are not being installed in accordance with state and local requirements, the construction plans, technical specifications, or approved permits, the construction inspector shall notify the Contractor and/or subcontractor to pause all construction-related activities associated with the identified issue. The Contractor and the Engineer of Record shall then discuss and determine appropriate corrective actions to bring the materials and/or equipment into compliance with the contract document requirements.
  - 5) Once construction of the lift station site is complete, the Contractor shall schedule a Lift Station Start-Up meeting. During this meeting, the Engineer of Record will review all materials and equipment installed at the site to confirm that the rehabilitated lift station complies with all state and local requirements, as well as the construction plans, technical specifications, and approved permits. The Contractor will be required to correct any problems or issues identified in the field by the Engineer of Record, if necessary. Once the Engineer of Record has completed its review of the civil, mechanical, electrical, and structural lift station components, the Engineer of Record will certify the lift station rehabilitation, and the lift station will be placed into service.

K:\1235 Cedar Key\123503.03 Sanitary Sewer Lift Station Rehabilitation - Phase II\5. DWG\M-902.dwg, Jan 27, 2026 - 12:29:32PM, tlee

### PUMP STATION IMPROVEMENT SCHEDULE

DESCRIPTION	GPM	TDH	"A" (HP)	"B"	"C"	"D"	"E"	"F"	"G"	"H"	"I"	"J"	"K"	"L"	"M"	"N"	"O"	"P"	REMARKS
P S No. 3	198	28	3	7.42	± 4.92	± -5.26	± 10'-2"	4"	4"	-3.54	-2.33	-1.08	-0.08	-	-	± -1.36	5'-0"	26"(MIN)	
P S No. 4	84	24.5	3	6.93	± 4.43	± -7.23	± 11'-8"	4"	4"	-5.51	-4.30	-2.90	-2.40	-	-	± -3.09	5'-0"	26"(MIN)	
P S No. 5	112	22	3	6.96	± 4.46	± -7.92	± 12'-5"	4"	4"	-6.20	-4.99	-3.59	-3.25	-	-	± -2.16	5'-0"	26"(MIN)	
P S No. 15	137	39.9	5	7.65	± 5.15	± -8.71	± 13'-10"	4"	4"	-6.99	-5.82	-3.82	-3.32	-3.24	-	± -3.23	5'-0"	26"(MIN)	
P S No. 16	115	34.8	5	7.34	± 4.84	± -7.23	± 12'-1"	4"	4"	-5.51	-4.34	-2.39	-1.89	-	± -2.72	± -2.78	5'-0"	26"(MIN)	

- #### CONSTRUCTION KEY NOTES:
- CONTRACTOR IS RESPONSIBLE FOR INSTALLING ALL PIPING, FITTINGS & VALVES ABOVE THE HDPE/316 S.S. TRANSITION FITTING.
  - CONTRACTOR TO ROTATE 90° BEND AS REQUIRED TO CONNECT TO THE EXISTING FORCE MAIN
  - CONTRACTOR TO CONSTRUCT SELF-LEVELING LAYER VIA STRUCTURAL GROUT. SEE STRUCTURAL SHEET S-103 FOR DETAILS

**BASKERVILLE-DONOVAN, INC.**  
**ENGINEERING THE SOUTH SINCE 1927**  
 449 W. MAIN ST. PENSACOLA, FL 32502 (850)438-9861  
 ENGINEERING BUSINESS: EB-00003040  
 Pensacola - Panama City - Tallahassee - Mobile  
This drawing is the property of BASKERVILLE-DONOVAN, INC. and is not to be reproduced in whole or in part. It is not to be used on any other project and is to be returned upon request.

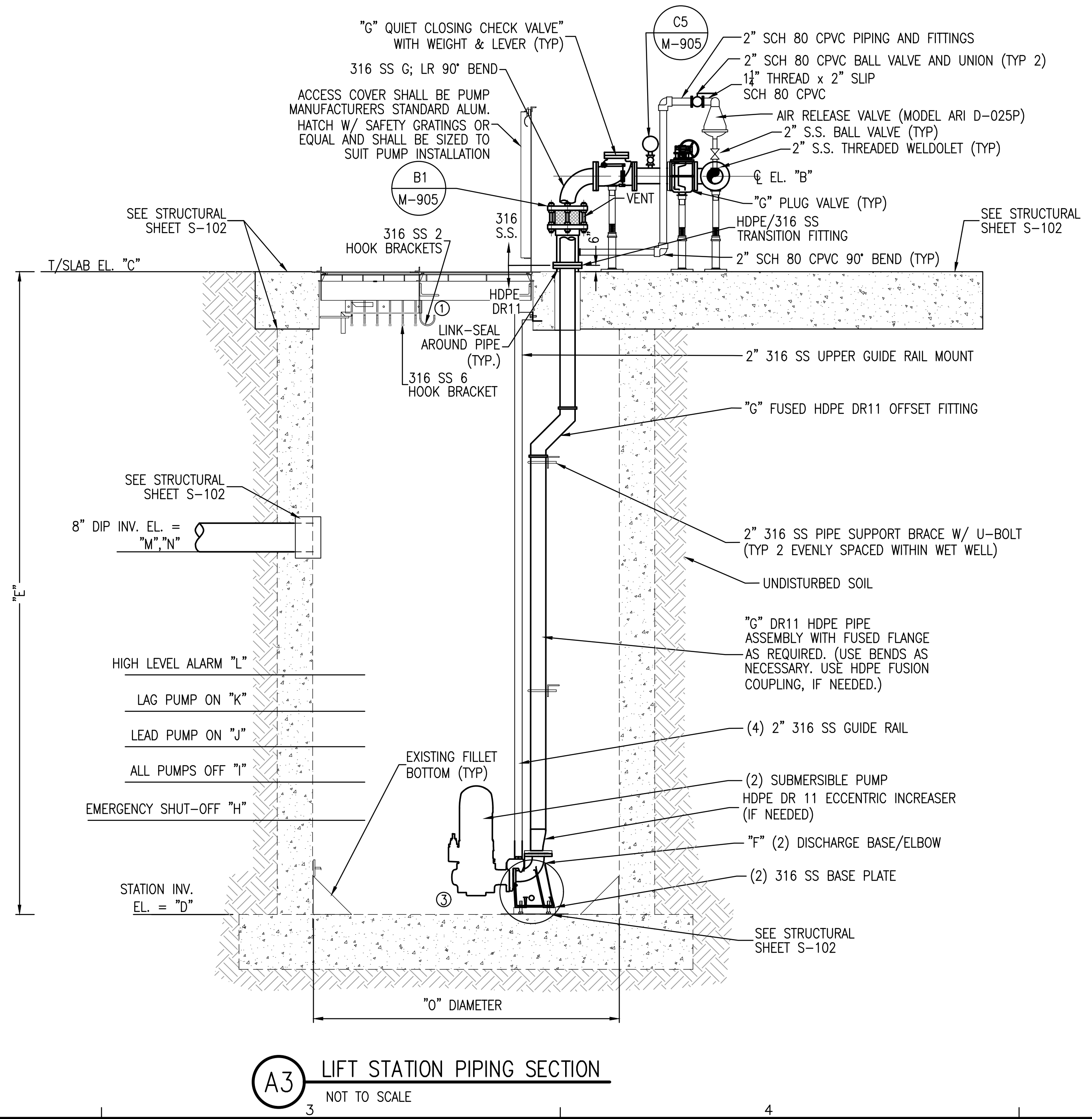
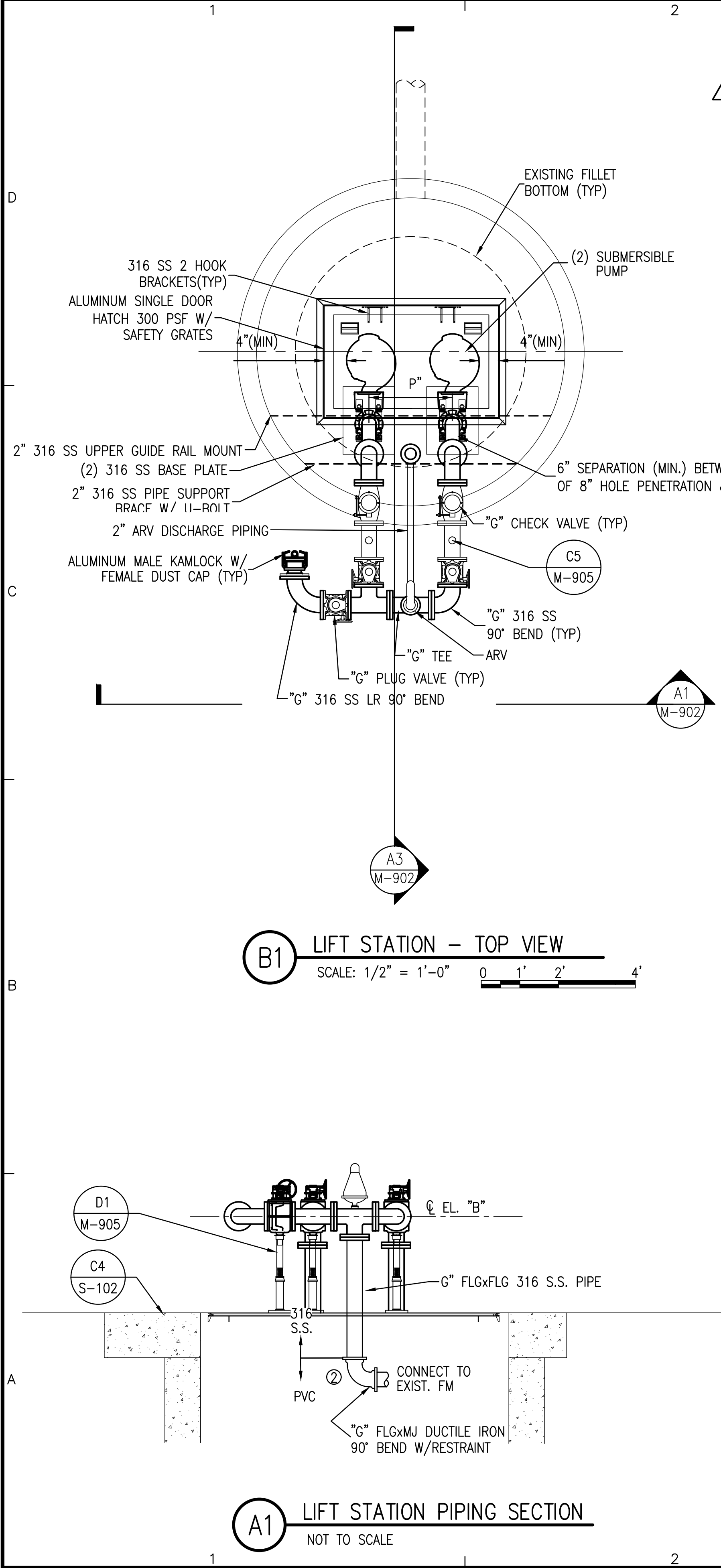
TYLER T. LEE, P.E.  
 FL Reg. Engineer #83308

**CEDAR KEY**  
**SANITARY SEWER**  
**LIFT STATION**  
**REHABILITATION-PHASE II**

NO.	DATE	APPR.	REVISION/ACTION TAKEN
1	1/19/26	TTL	ADDENDUM 4
2	1/27/26	TTL	ADDENDUM 5

PROJECT NO: 123503.03  
 DESIGNED BY: JAW  
 DRAWN BY: THO  
 CHK'D BY: JEA  
 PROJ. MGR: TTL  
 DATE: NOVEMBER 2025  
 NOT RELEASED FOR CONSTRUCTION BY DATE

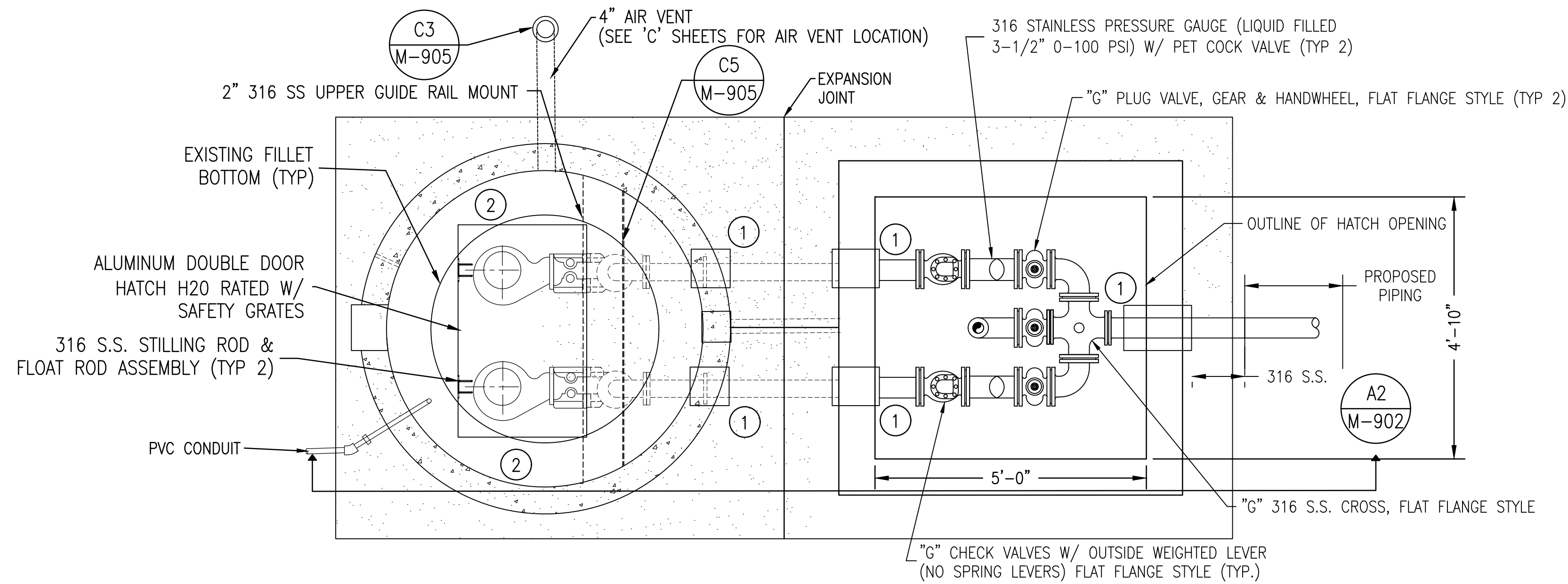
**M-902**



**SHEET NOTE:**

- CONTRACTOR SHALL FINALIZE EMERGENCY SHUT-OFF AND HIGH LEVEL ALARM FLOAT ELEVATIONS WITH PUMP MANUFACTURER AND OWNER

K:\1235 Cedar Key\123503.03 Sanitary Sewer Lift Station Rehabilitation - Phase II\5. DWG\M-903.dwg, Jan 27, 2026 - 12:08:25PM, tlee



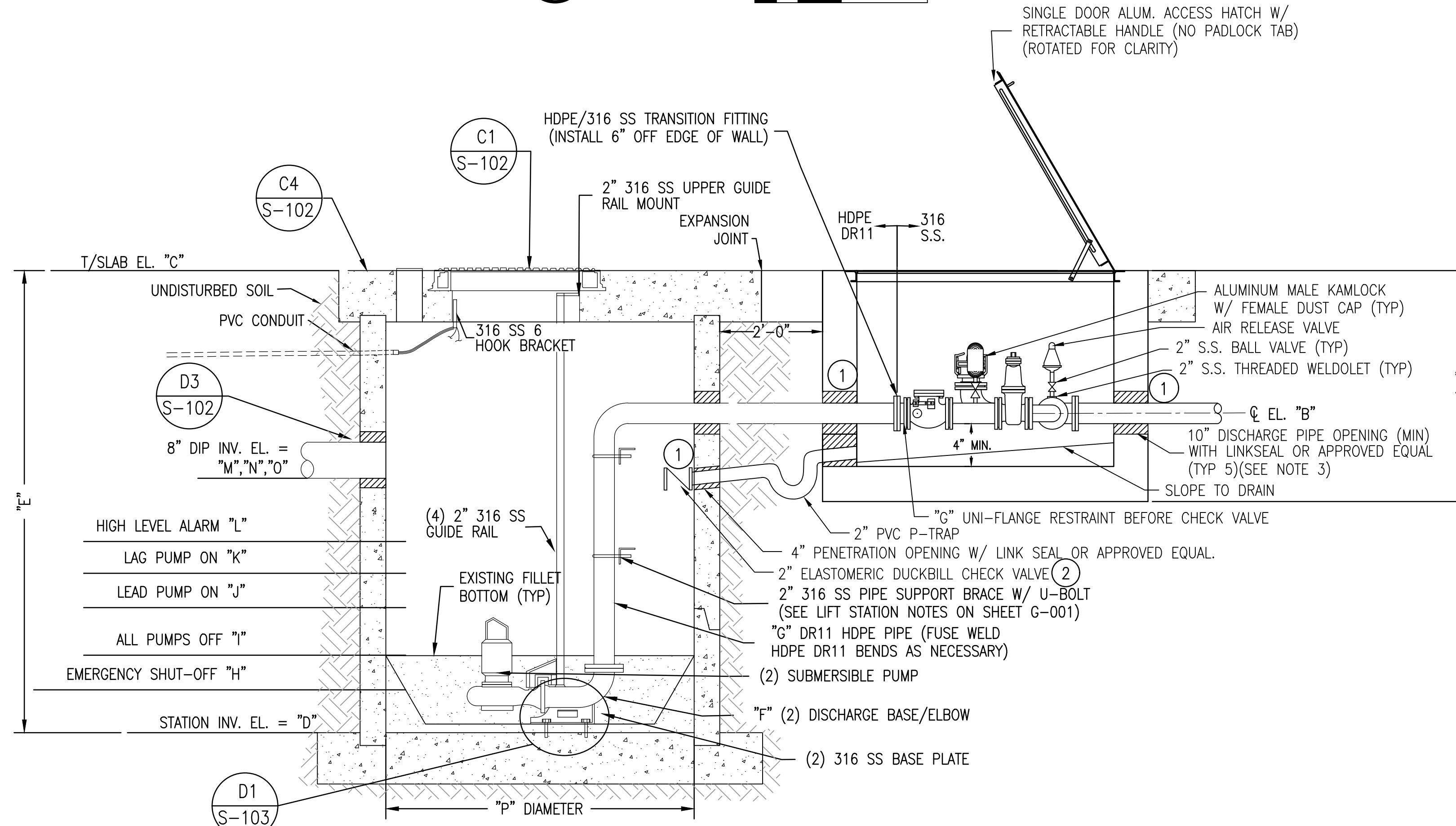
**(C2) LIFT STATION 2 UPGRADE PLAN**  
SCALE: 1" = 1.25' 0 0.625' 1.25' 2.5'

**CONSTRUCTION KEY NOTES:**

- CONTRACTOR TO SEAL INTERIOR OF CONCRETE PENETRATION WITH BASF MASTERFLOW 4316 NON-SHRINK GROUT OR APPROVED EQUAL. PLACE 3/8" THICK CONTINUOUS BEAD OF SIKASWELL S-2 HYDROPHILIC WATERSTOP OR APPROVED EQUAL AROUND PIPE AND CORED CONCRETE SURFACE PRIOR TO GROUTING.
- THE ELASTOMERIC DUCKBILL CHECK VALVE SHALL HAVE A DOCUMENTED CRACKING PRESSURE OF  $\leq 2"$  WATER COLUMN & SUITABLE FOR WASTEWATER APPLICATION.

**SHEET NOTES:**

- CONTRACTOR SHALL FINALIZE EMERGENCY SHUT-OFF AND HIGH LEVEL ALARM FLOAT ELEVATIONS WITH PUMP MANUFACTURER AND OWNER.
- SEE C-102 FOR LOCATION OF 4" AIR VENT.



**(A2) LIFT STATION 2 UPGRADE SECTION**  
SCALE: 1" = 1.25' 0 0.625' 1.25' 2.5'

**PUMP STATION IMPROVEMENT SCHEDULE**

DESCRIPTION	GPM	TDH	"A" (HP)	"B"	"C"	"D"	"E"	"F"	"G"	"H"	"I"	"J"	"K"	"L"	"M"	"N"	"O"	"P"	REMARKS
P S No. 2	154	19.2'	3.0	9.80	13.25	-2.15	±15'-5"	4"	4"	-0.43	0.78	2.03	3.03	3.30	± 4.61	± 4.33	-	5'-0"	

**BASKERVILLE-DONOVAN, INC.**  
ENGINEERING THE SOUTH SINCE 1927  
449 W. MAIN ST. PANASCOOLA, FL 32602 (850)438-9861  
ENGINEERING BUSINESS: EB-00000340  
Panascoola - Panama City - Tallahassee - Mobile

TYLER T. LEE, P.E.  
FL Reg. Engineer #93308

**CEDAR KEY  
SANITARY SEWER  
LIFT STATION  
REHABILITATION - PHASE II**

PROJECT NO.	DESIGNED BY	CHK'D BY	PROJ. MGR.	DATE	NO.	DATE	APPR.	REVISION/ACTION TAKEN
123503.03	TTL	RCG	TTL	NOVEMBER 2025	1	1/19/26	TTL	ADDENDUM 4
					2	1/27/26	TTL	ADDENDUM 5
								NOT RELEASED FOR CONSTRUCTION BY DATE

**STANDARD DETAIL  
FOR LIFT STATION 2  
IMPROVEMENTS**  
**M-903**

This drawing is the property of BASKERVILLE-DONOVAN, INC. and is not to be reproduced in whole or in part. It is not to be used on any other project and is to be returned upon request.

**FIBERGLASS WET WELL AND VALVE BOX DESIGN SPECIFICATIONS**

**PUMP**

THE PUMP SHALL HAVE AN INTEGRALLY BUILT IN GRINDER UNIT AND SUBMERSIBLE TYPE MOTOR. THE PUMP SHALL BE SUSPENDED IN THE BASIN BY TWO (2) 1" GUIDE RAILS AND QUICK DISCONNECT LIFT OUT MOUNTING ASSEMBLY THAT IS COMPATIBLE WITH 2" DISCHARGE PIPING. SOLIDS SHALL BE FED IN AN UPFLOW DIRECTION TO THE GRINDER MECHANISM WITH NO OBSTRUCTIONS BELOW THE GRINDER INLET. THE GRINDER PUMP DUTY POINT SHALL BE 28 GPM AT 33' TDH. THE SECONDARY DUTY POINT SHALL BE 30.0 GPM AT 36.0' TDH.

**MOTOR**

THE PUMP MOTOR SHALL BE OF THE SUBMERSIBLE TYPE RATED FOR 2 HORSEPOWER AT 3450 RPM. MOTORS SHALL BE THREE PHASE, 208/230/460 VOLT, 60 HERTZ.

THE STATOR WINDING SHALL BE THE OPEN TYPE WITH CLASS F INSULATION RATED FOR 155° C MAXIMUM OPERATING TEMPERATURE. THE WINDING HOUSING WILL BE FILLED WITH CLEAN DIELECTRIC OIL THAT WILL LUBRICATE BEARINGS, SEALS AND TRANSFER HEAT FROM THE WINDINGS TO THE OUTER SHELL. THE MOTOR STATOR IS TO BE PRESSED INTO THE MOTOR HOUSING FOR OPTIMUM CONCENTRICITY AND ALIGNMENT, AND MAXIMUM HEAT TRANSFER.

THE MOTOR SHALL HAVE TWO BEARINGS TO SUPPORT THE ROTOR; AN UPPER BALL BEARING TO ACCOMMODATE THRUST LOADS AND A LOWER BALL BEARING TO TAKE RADIAL LOADS. BALL BEARINGS SHALL BE DESIGNED FOR A B-10 LIFE (50,000 HOURS).

A HEAT SENSOR THERMOSTAT AND OVERLOAD SHALL BE ATTACHED TO THE TOP END OF THE MOTOR WINDINGS AND SHALL STOP THE MOTOR IF THE MOTOR WINDING TEMPERATURE REACHES 200° F. THE HIGH TEMPERATURE SHUTOFF WILL CAUSE THE PUMP TO CEASE OPERATION, SHOULD A CONTROL FAILURE CAUSE THE PUMP TO RUN IN A DRY WET WELL. THE THERMOSTAT SHALL RESET AUTOMATICALLY WHEN THE MOTOR COOLS TO A SAFE OPERATING TEMPERATURE.

**SEAL CHAMBER**

THE MOTOR SHALL BE PROTECTED BY TWO (2) ROTARY SHAFT SEALS MOUNTED IN TANDEM WITH AN OIL FILLED CHAMBER SEPARATING THE SEALS. THE SEALS SHALL HAVE CARBON AND CERAMIC SEAL FACES DIAMOND LAPPED TO A TOLERANCE OF ONE LIGHT BAND. METAL PARTS AND SPRINGS FOR SEALS SHALL BE STAINLESS STEEL. AN ELECTRICAL SENSING PROBE SHALL BE MOUNTED IN THE SEAL CHAMBER TO DETECT ANY WATER LEAKAGE PAST THE LOWER SEAL.

**GRINDER ASSEMBLY & CONSTRUCTION**

THE GRINDER ASSEMBLY SHALL CONSIST OF A ROTATING AXIAL CUTTER AND A STATIONARY SHREDDING RING, AND SHALL BE MOUNTED DIRECTLY BELOW THE VOLUTE PASSAGE. THE ROTATING CUTTER SHALL BE THREADED ONTO THE STAINLESS STEEL SHAFT AND SHALL BE LOCKED WITH A SCREW AND WASHER. THE STATIONARY SHREDDING RING SHALL BE PRESSED INTO AN IRON HOLDING FLANGE FOR EASY REMOVAL. THE FLANGE SHALL BE PROVIDED WITH TAPPED BACK-OFF HOLES SO THAT SCREWS CAN BE USED TO PUSH THE SHREDDING RING FROM THE HOUSING. BOTH THE RADIAL CUTTER AND SHREDDING RING SHALL BE REMOVABLE FROM THE OUTSIDE WITHOUT DISMANTLING PUMP. GRINDER ASSEMBLY SHALL BE OF SUCH CONSTRUCTION THAT NO CLEARANCE ADJUSTMENTS ARE REQUIRED WHEN ASSEMBLING. ALL GRINDING OF SOLIDS SHALL BE FROM THE ACTION OF THE RADIAL CUTTER AGAINST THE SHREDDING RING. THE RADIAL CUTTER AND SHREDDING RING SHALL BE OF #440 STAINLESS STEEL HARDENED TO 58-60 ROCKWELL C, OR APPROVED EQUAL.

**PUMP IMPELLER**

THE PUMP IMPELLER SHALL BE OF THE RECESSED TYPE TO PROVIDE AN OPEN UNOBSTRUCTED PASSAGE THROUGH THE VOLUTE FOR THE GROUND SOLIDS. THE IMPELLER SHALL BE CONSTRUCTED OF CAST IRON AND SHALL HAVE PUMP OUT VANES ON THE BACK SIDE OF THE IMPELLER TO KEEP SOLIDS FROM LOWER SEAL AND REDUCE PRESSURE AT THE SEAL FACES. IMPELLER SHALL BE THREADED ONTO THE STAINLESS STEEL SHAFT.

**PUMP & MOTOR CASTINGS**

ALL IRON CASTING SHALL BE OF HIGH TENSILE CAST IRON AND SHALL BE PROPERLY CLEANED, PRE-TREATED WITH CHROMIC RINSE, AND PAINTED WITH A HIGH QUALITY ENAMEL PAINT. ALL PUMP COMPONENTS THAT ARE NOT CAST IRON OR STAINLESS STEEL SHALL BE GALVANIZED OR PAINTED WITH BAKED-ON EPOXY. ALL FASTENERS SHALL BE STAINLESS STEEL.

**WET WELL**

SHALL BE A FILAMENT WOUND FIBERGLASS BASIN USING A COMMERCIAL GRADE OF GLASS FIBER HAVING A COUPLING AGENT WHICH WILL PROVIDE A SUITABLE BOND BETWEEN THE GLASS REINFORCEMENT AND THE RESIN. THE LAMINATE SHALL CONSIST OF AN INNER SURFACE, AN INTERIOR LAYER, AND AN EXTERIOR LAYER OF LAMINATE BODY. THE INNER SURFACE SHALL BE FREE OF CRACKS AND CRAZING WITH A SMOOTH FINISH. SOME WAVINESS IS PERMISSIBLE AS LONG AS THE SURFACE IS SMOOTH AND FREE OF PITS. BETWEEN 0.010 AND 0.020 INCHES OF RESIN-RICH SURFACE SHALL BE PROVIDED. THE BASIN SHALL BE PROVIDED WITH AN ANTI-FLOATATION RING TO PREVENT RISING. IN CONJUNCTION WITH THE PROPER AMOUNT OF CONCRETE BALLAST. WETWELL PKG. SHALL BE AS PROVIDED BY CUSTOM PUMP & CONTROLS UTILIZING RESILIENT MOUNT PIPE CONNECTION ASSEMBLIES TO ALLOW FOR VARIATIONS IN SETTING PIPING ALIGNMENTS AND CHANGES FROM BACKFILLING AFTER SETTING. RIGID CAST IN PIPE FITTINGS OR FIBERGLASS RIGID HUBS WILL NOT BE CONSIDERED EQUAL OR ACCEPTABLE.

**VALVE BOX**

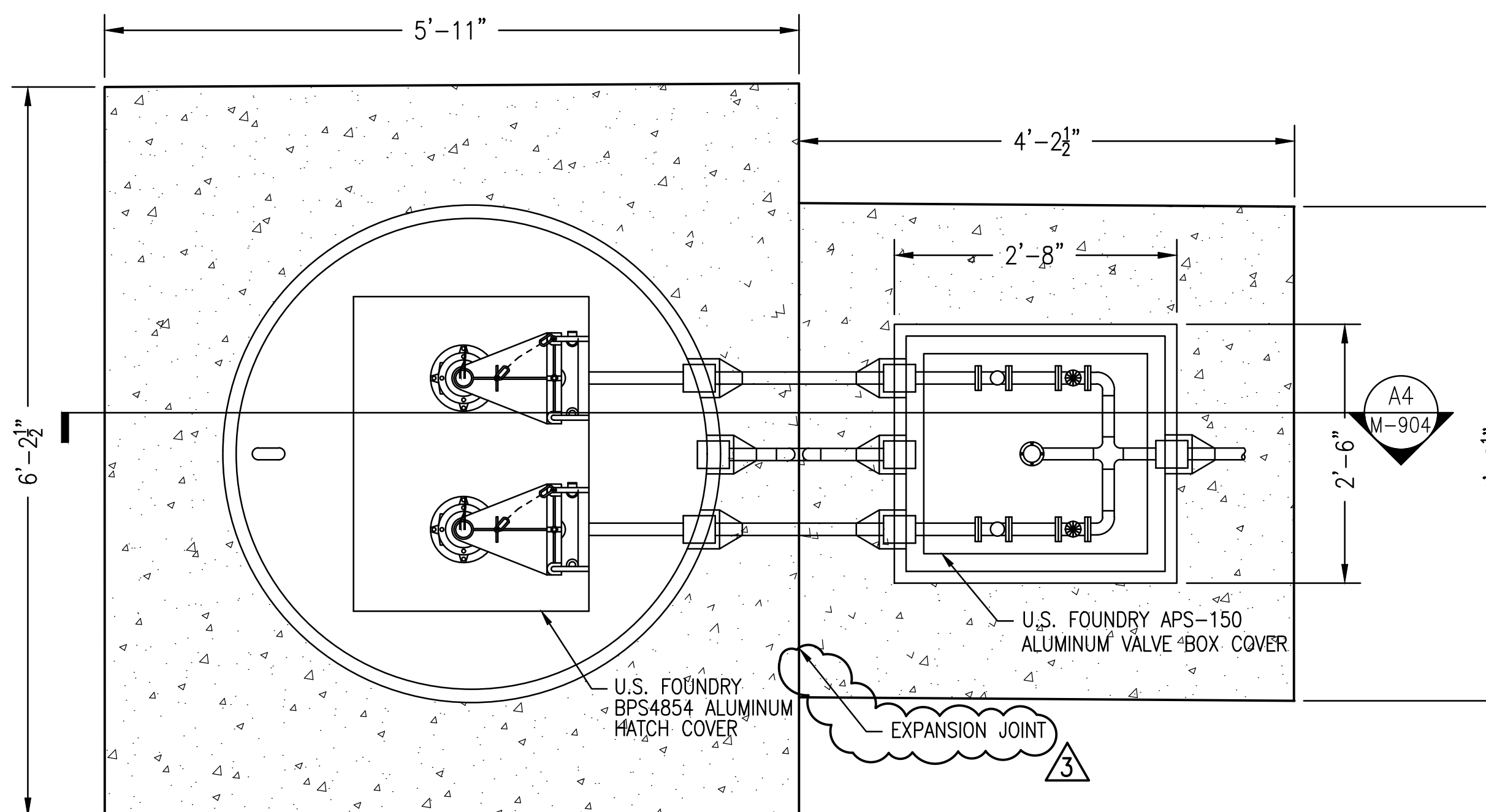
SHALL BE FIBERGLASS VALVE BOX (PAD LOCKABLE) AND THE HATCH SHALL BE SINGLE LEAF 100% WATER TIGHT HATCH. VALVE BOX SHALL BE PRE-PLUMBED USING ALL SCHEDULE 80 PVC PIPING AND FITTINGS, AND SHALL INCLUDE TWO (2), 2" SCHEDULE 80 PVC "Y" TYPE PISTON CHECK VALVES, AND THREE (3), 2" SCHEDULE 80 PVC GATE VALVES. (ONE (1) 2" GATE VALVE IS SUPPLIED AS AN EMERGENCY PUMP-OUT). PVC PIPING IN VALVE BOX, AND WET WELL SHALL BE CONNECTED AND HELD IN PLACE BY CPC MODEL 32 RESILIENT MOUNT SEALING SYSTEM, OR APPROVED EQUAL TO COMPENSATE FOR POSSIBLE UNEVEN SETTLING OF BASIN OR VALVE BOX.

**ALUMINUM GRINDER PUMP HATCH COVERS**

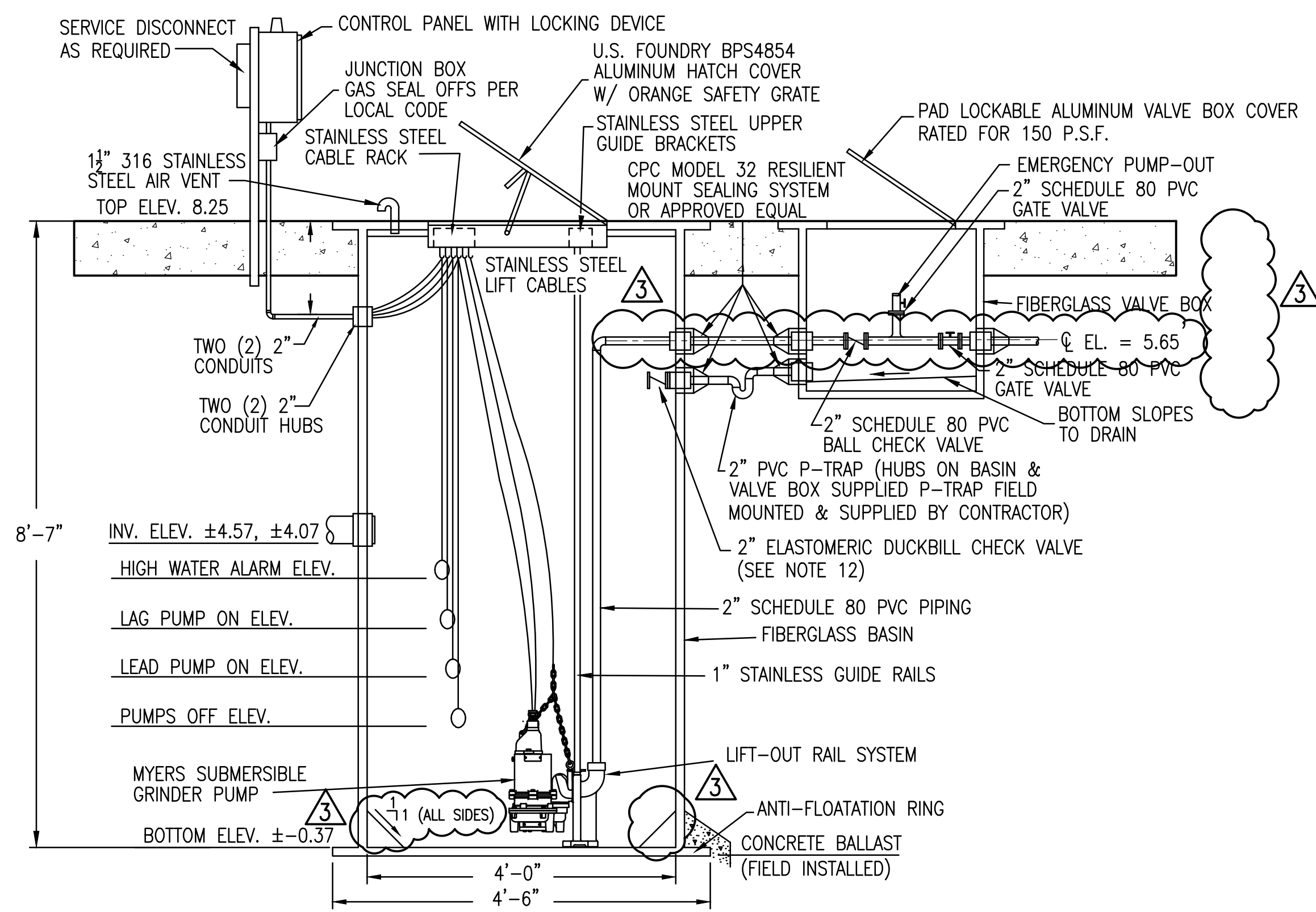
SHALL BE FABRICATED FROM 1/4" ALUMINUM DIAMOND PLATE AND BUILT TO WITHSTAND A LOAD OF 150 LB. P.S.F. WITH STAINLESS STEEL BOLTS, NUTS AND HINGES - LOCKING STAPLE. THE HATCH COVER SHALL BE SINGLE LEAF AND RATED FOR 100% WATER TIGHTNESS

**NOTE**

BASIN AND VALVE BOX COMPLIES TO THE FOLLOWING STANDARDS  
 ASTM D3753  
 ASTM D2582  
 AWWA C950



**C4 LIFT STATION 8 TOP VIEW**  
NOT TO SCALE



**A4 LIFT STATION 8 PIPING SECTION**  
NOT TO SCALE

**SHEET NOTES:**

1. THE GRINDER PUMP FIBERGLASS WET WELL AND VALVE BOX ASSEMBLY SHALL BE SUPPLIED FROM A SINGLE PUMP MANUFACTURER. THE "BASIS OF DESIGN" FOR THE GRINDER PUMP FIBERGLASS WET WELL AND VALVE BOX ASSEMBLY IS PENTAIR MYERS. CONTRACTOR SHALL REFER TO SPECIFICATION 33 32 13 - SUBMERSIBLE CENTRIFUGAL PUMPS FOR APPROVED EQUAL ALTERNATIVES.
2. TANK TO BE WATER FILLED (HYDRO TESTED) FOR A 24 HOUR PERIOD AFTER THE TANK IS INSTALLED.
3. PROPER VENTING MUST BE UTILIZED. IF VENT SCREENS ARE PRESENT THEY SHOULD BE KEPT CLEAN DAILY.
4. DO NOT ENTER TANK UNLESS FEDERAL AND STATE O.S.H.A. TANK ENTRY PROCEDURES HAVE BEEN FOLLOWED.
5. IT SHALL BE THE PUMP SUPPLIER'S RESPONSIBILITY TO CONFIRM THE ADEQUACY OF THE SPECIFIED MINIMUM HATCH SIZE TO ENABLE THE PUMP(S) TO BE EASILY REMOVED FROM THE WET WELL THROUGH THE HATCH WITHOUT DISASSEMBLY WITH A MINIMUM 4" CLEAR. UPSIZE HATCHES AS NEEDED.
6. EACH HATCH FRAME GRATE DRAIN SHALL BE PIPED TO DRAIN TO THE WEST. DRAIN PIPING SHALL BE PVC EMBEDDED IN THE STATION TOP.
7. A FIBERGLASS WETWELL SUBMITTAL SHALL BE SUBMITTED BY THE CONTRACTOR.
8. CONTRACTOR SHALL SUBMIT A SUBMITTAL FOR ALL PIPING, VALVES AND APPURTENANCES ASSOCIATED WITH THE GRINDER PUMP STATION.
9. FIBERGLASS WETWELL MANUFACTURER SHALL SUBMIT SIGNED AND SEALED BUOYANCY CALCULATIONS BY A FLORIDA REGISTERED ENGINEER.
10. REFERENCE SPECIFICATION 08 31 13 - ACCESS DOORS AND FRAMES FOR PUMP AND VALVE VAULT HATCH REQUIREMENTS.
11. CONTRACTOR SHALL FINALIZE EMERGENCY SHUT-OFF AND HIGH LEVEL ALARM FLOAT ELEVATIONS WITH PUMP MANUFACTURER AND OWNER.
12. THE ELASTOMERIC DUCKBILL CHECK VALVE SHALL HAVE A DOCUMENTED CRACKING PRESSURE OF  $\leq 2$ " WATER COLUMN & SUITABLE FOR WASTEWATER APPLICATION.
13. FIBERGLASS WET WELL SHALL HAVE 1:1 FILLETS PROVIDED WITH THE FIBERGLASS WET WELL ASSEMBLY.

**DELEGATED ENGINEERING DESIGN**

1. ALL DELEGATED ENGINEERING ITEMS SHALL BE PROVIDED BY THE FIBERGLASS WETWELL MANUFACTURER. DELEGATED ENGINEERING DESIGNS SHALL BE PERFORMED BY A FLORIDA LICENSED P.E., AND SHALL INCLUDE ALL DESIGN AND CALCULATIONS AND SUPPORTING DOCUMENTS IN DELEGATED DOCUMENTS PER CONTRACT DOCUMENTS.

DELEGATED ITEM #1: GRINDER PUMP STATION TOP SLAB PENETRATIONS AND REINFORCEMENT.

DELEGATED ITEM #2: GRINDER PUMP STATION ANTI-FLOTATION RING.

PRIOR TO THE COMMENCEMENT OF WORK, THE STRUCTURAL ENGINEER OF RECORD WILL ISSUE TO THE CONTRACTOR'S DELEGATED ENGINEER(S) AN AFFIRMATION OF THE ENGINEERING REQUIREMENTS FOR HIS WORK.

AT THE COMPLETION OF THE CONSTRUCTION, THE DELEGATED ENGINEER SHALL ISSUE A CERTIFICATE OF COMPLETE CONSTRUCTION, NOTING ANY DEVIATIONS FROM PLANS AND APPROVED SHOP DRAWINGS.

**BASKERVILLE-DONOVAN, INC.**  
 ENGINEERING THE SOUTH SINCE 1927  
 449 W. MAIN ST. PENSACOLA, FL 32502 (850)438-9861  
 ENGINEERING BUSINESS EB-00003040  
 Pensacola - Panama City - Tallahassee - Mobile

This drawing is the property of BASKERVILLE-DONOVAN, INC. and is not to be reproduced in whole or in part. It is to be used on any other project and is to be returned upon request.

TYLER T. LEE, P.E.  
 FL Reg. Engineer #93309

**CEDAR KEY**  
**SANITARY SEWER**  
**LIFT STATION**  
**REHABILITATION-PHASE II**

NO.	DATE	APPR.	REVISION/ACTION TAKEN
1	12/17/25	TTL	ADDENDUM 2
2	01/2026	TTL	ADDENDUM 4
3	01/2026	TTL	ADDENDUM 5

PROJECT NO: 123503.03  
 DESIGNED BY: JAW  
 DRAWN BY: THO  
 CHK'D BY: JEA  
 PROJ. MGR: TTL  
 DATE: NOVEMBER 2025  
 NOT RELEASED FOR CONSTRUCTION BY DATE

**STANDARD DETAIL**  
**FOR LIFT STATION 8**  
**IMPROVEMENTS**

**M-904**

K:\1235 Cedar Key\123503.03 Sanitary Sewer Lift Station Rehabilitation - Phase II\5. DWG\M-904.dwg, Jan 27, 2026 - 1:33:02PM, tee